



PRODUCT CATALOGUE

DeltaCool™ is an Insulated Wall Panel System, comprising of two pre-painted, roll-formed steel skins, which can be bonded to any of our 3 core material options.

Both skins have a roll-formed tongue and groove edge.

Skins are coated with an anti-bacterial paint that inhibits the growth of bacteria.

DeltaSecretFix

The top and bottom skins are offset by 25mm, this allows for the placement of the Interface locking bracket which has the dual purpose of locking the top and bottom skins together while also offering a method of secretly fixing the panel. The result is a clean exterior finish with no visible fasteners.

Core Options Available

- Expanded Polystyrene, Fire Retardant Grade (EPS-FR)
- Thermosetting Phenolic Composite (TPC)
- Mineral Wool (MW)

Profiles Available

- Smooth
- Ribbed
- MicroRibbed
- 5V
- SingleV

Recommendations

- Cold Stores
- Commercial Kitchens
- Food Processing Areas
- Portable Buildings
- Home Extensions
- Agricultural Buildings
- Spray Booths
- Wineries
- Commercial Buildings
- Residential Buildings
- Growing Rooms
- Clean Rooms

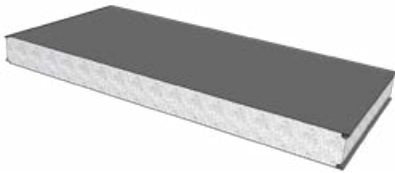
Steel Skin Details ColorBond®	Top Skin	0.40mm / 0.60mm / G300 Z275
	Bottom Skin	0.40mm / 0.60mm / G300 Z275
Adhesive	Thermosetting two-part adhesive	
Factory Mutual	DeltaCool-TPC - Accredited Class 4880, 4881 & 4882	
Sheet Coverage	1200mm	
Length (mm)	Cut to length. Min. of 1800mm	
Thickness (mm)	50, 75, 100, 125, 150, 175, 200 * MW 75-150 only.	
Flatness Standards	0.40mm 0.60mm	Surface deformations can be apparent to the naked eye when observed in certain lighting conditions



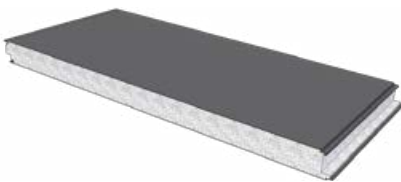


PANEL TYPES

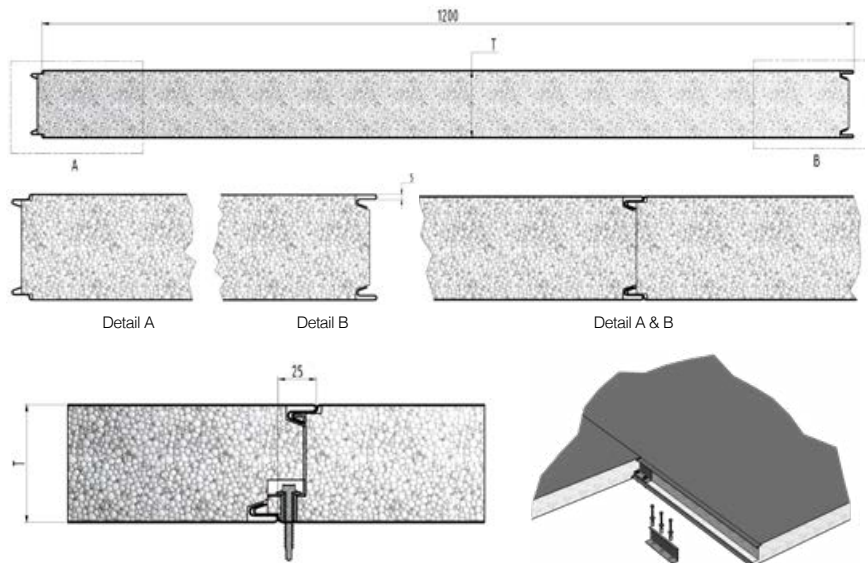
DeltaCool



DeltaSecretFix



JOINER OPTIONS



CORE OPTIONS

Expanded Polystyrene-Fire Retardant (EPS-FR)

EPS-FR has an added fire retardant additive that allows the core to shrink away from any flame source. EPS-FR core allows for strong, light weight panels that are very cost effective in a variety of commercial and residential building applications.



Thermosetting Phenolic Composite (TPC)



The range of Delta Panels TPC core panels have been extensively independently tested. The panels have been certified as meeting the requirements of Group 1 classification in accordance with AS 5367.1.2015. Furthermore they have undergone AS 1530-1999 Early Fire Hazard Properties. The TPC core panels combine long spanning with excellent thermal performance. Patent Application 2022903579



Mineral Wool (MW)

The Delta Panels range of laminated Mineral Wool panels are certified by Milanovic Neale Consulting Engineers to meet the three (3) performance criteria in the NCC (2019) Section 1.9 (non-combustible building elements). The CSIRO report no. FNC 12604, certified that the five (5) mineral wool samples were NOT deemed combustible according to the criteria in clause 3.4 of AS 1530.1:1994. As there are no thermal bridges, Mineral Wool posses good thermal insulation properties.





FACTORY MUTUAL



DeltaCool-TPC is Factory Mutual Accredited:-
 Class 4880 - No Height Restriction
 Class 4881
 Class 4882 - Pharmaceutical Manufacturing & Food Preparation and Storage.



BUSHFIRE ATTACK LEVEL (BAL 29)



DeltaCool-TPC achieved Bal29 as per CSIO report no FSZ2373 issued 9 June 2023
 DeltaCool-EPS-FR is certified as Bal29 as per the BRANZ Bushfire Report FC 10893-001 24 October 2018

CODEMARK



CodeMark Australia Certificate CM 40365 certifies that DeltaCool-EPS-FR & DeltaCool-TPC complies with the stated performance provisions of the NCC 2022.

FIRE TEST CERTIFICATE - AS ISO 9705



Group 1 Classification in accordance with NCC Volume One Specification BCA2022 C2D11 & Specification 7, Fire Hazard Properties, Clause S7C4 determined in accordance with AS 5637.1:2015 as per BRANZ test report FI6323-01-2 issued 23rd February 2021

Early Fire Hazard Properties AS 1530.3:1999

AWTA Test Report 23-000591 20-02-2023

Index	Test Range	External Top Skin
Ignitability	0-20	0
Spread of Flame	0-10	0
Heat Evolved	0-10	0
Smoke Developed	0-10	1

BLUESCOPE® / BLUESCOPE™		DeltaCool™ 0.60mm	DeltaCool™ 0.40mm
	Thredbo White®	●√	
	Surfmist®	●√	●√
	Classic Cream™	●√	
	Shale Grey™	●√	
	Paperbark®	●√	
	Basalt®	●√	
	Pale Eucalypt®	●√	
	Woodland Grey®	●√	
	Monument®	●√	
	Night Sky®	●√	

UNICOTE® / LUX		DeltaCool™ 0.60mm
	Metal Stone / LUX	●
	Spectrum / LUX	●
	Weathered Iron / LUX	●
	Zinc Graphite / LUX	●

Delta Panels™ offers a selection of modern patterned and textured steel finishes in our DeltaLux™ range of Wall panels.

® Colour names are registered trademarks of Bluescope Steel Limited.

™ Colour names are trademarks of Bluescope Steel Limited.

√ Range of COLORBOND® steel colours held in stock.



CORE MATERIAL COMPARISONS

CORE MATERIAL	Expanded Polystyrene with Fire Retardant		Thermosetting Phenolic Composite		Mineral Wool	
	EPS-FR		TPC		MW	
ACOUSTIC CHARACTERISTICS						
Frequency: 50mm Panel -STC	24		24		25	
Frequency: 125mm Panel -STC	23		25		26	
CORE CHARACTERISTICS						
Core Density	13.5kg/m ³		36kg/m ³		100kg/m ³	
THERMAL CONDUCTIVITY						
W/mK @ 23C	0.042		0.0396		0.0365	
ENERGY PERFORMANCE						
	Winter (15°C)	Summer (23°C)	Winter (15°C)	Summer (30°C)	Winter (15°C)	Summer (23°C)
R Value: 50mm Panel	1.38	1.36	1.4	1.35	-	-
R Value: 75mm Panel	1.90	1.85	2.05	1.95	2.25	2.15
R Value: 100mm Panel	2.52	2.43	2.70	2.55	2.95	2.85
R Value: 150mm Panel	3.69	3.56	4.00	3.80	4.40	4.20
R Value: 200mm Panel	4.88	4.68	5.30	5.05	-	-
FIRE PERFORMANCE INFORMATION						
C1.1 Non Combustible C1.9e	Combustible		Combustible		Non-Combustible	
Early fire hazard properties (A.S. 1530.3 1999)	Ignitability - 0		Ignitability - 0		Ignitability - 0	
	Spread of Flame - 0		Spread of Flame - 0		Spread of Flame - 0	
	Heat Evolved - 0		Heat Evolved - 0		Heat Evolved - 0	
	Smoke Developed - 2		Smoke Developed - 1		Smoke Developed - 2	
AS/ISO 9705 classification	Group 1		Group 1		Group 1	
Factory Mutual (FM Approved)	-		FM 4880, 4881, 4882, 4471		-	
SMORGA (m2/S2 x 1000)	3.8		2.2		N/A	
Non Load Bearing Wall (AS 1530.4:2014)	N/A		N/A		-/60/120	
PHYSICAL INFORMATION						
Panel Weights: 0.6mm skins at 100mm core	11.6kgs/m ²		14.2kgs/m ²		20.25kgs/m ²	
Recyclability	Yes		Yes		Limited	
Safety handling requirements	Safety Data Sheet		Safety Data Sheet		Safety Data Sheet	